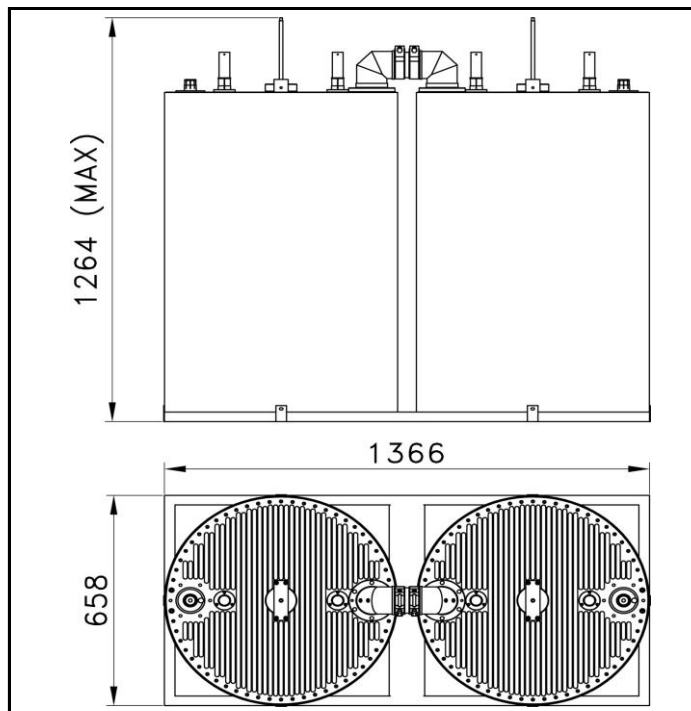
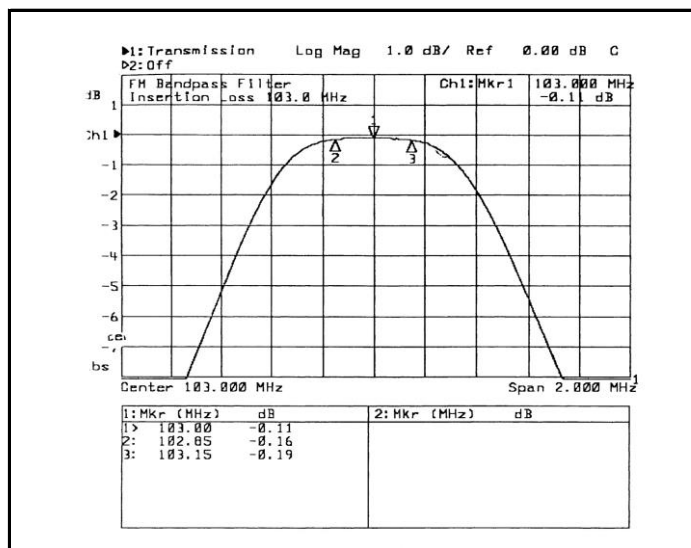
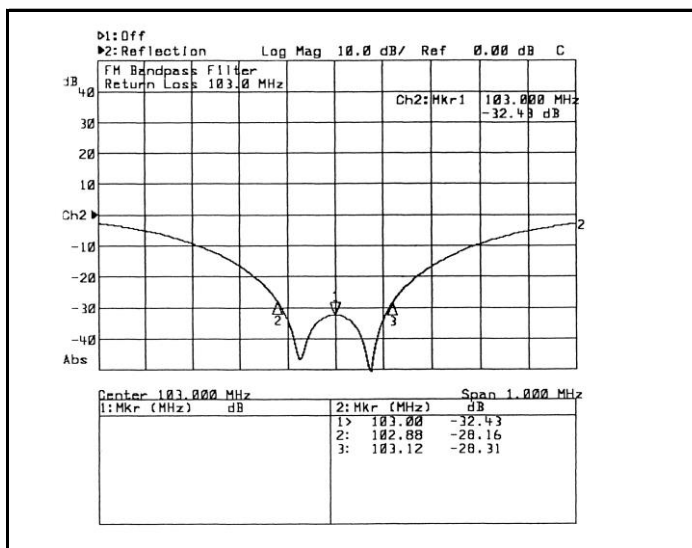


**PART NUMBER:** 20051

**TITLE:** 30kW FM BAND PASS FILTER (DOUBLE CAVITY)



MECHANICAL CHARACTERISTICS	
Connections (*)	EIA 3 1/8"
Temperature range (C°)	-10 ÷ 50
Weight (kg)	95



ELECTRICAL CHARACTERISTICS	
Frequency range (MHz)	87.5 ÷ 108
Maximum input power (W)	30000
Insertion loss (dB) @ fo	< 0.15
Insertion loss (dB) @ fo ± 150 kHz	< 0.20
Selectivity (dB) @ fo ± 2 MHz	> 24
Return loss (dB)	> 26
Input/output impedance (Ohm)	50

(\*) Different connectors on request.