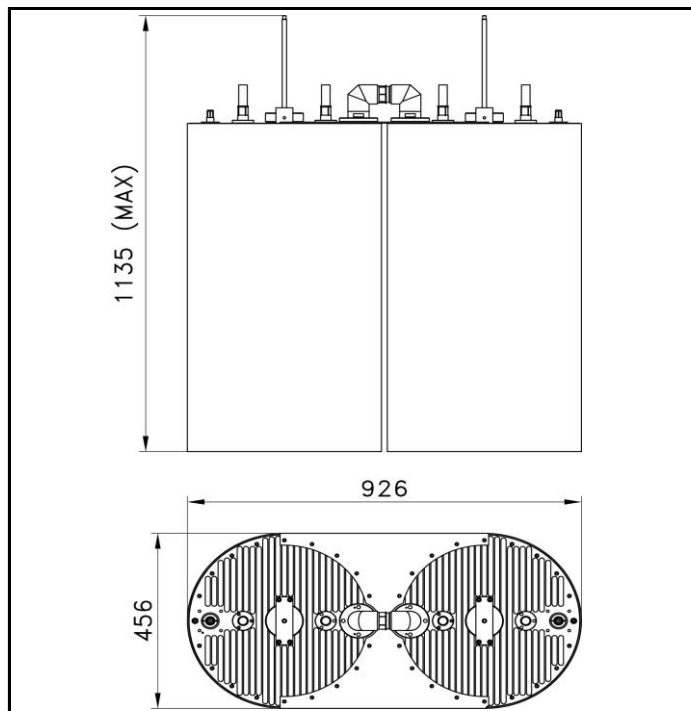
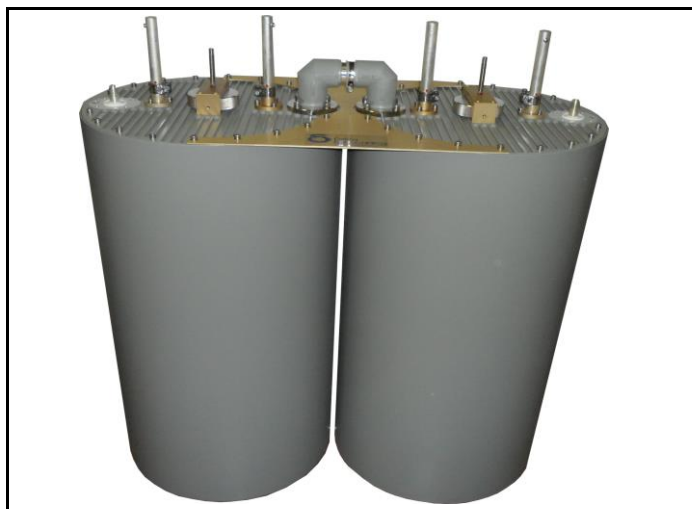
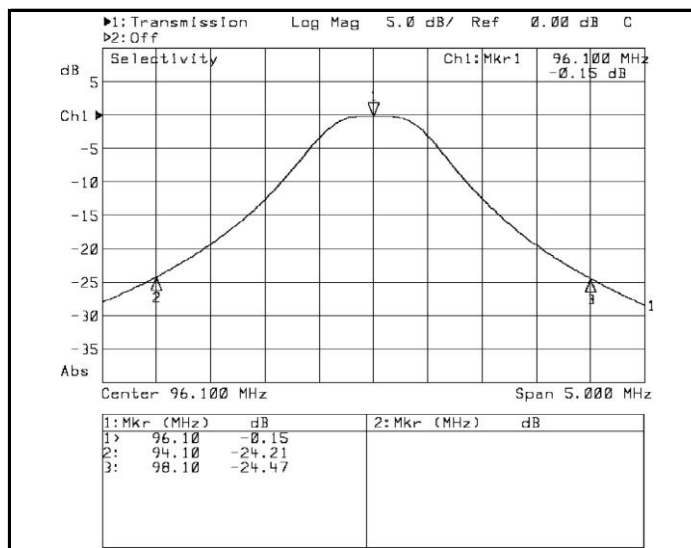
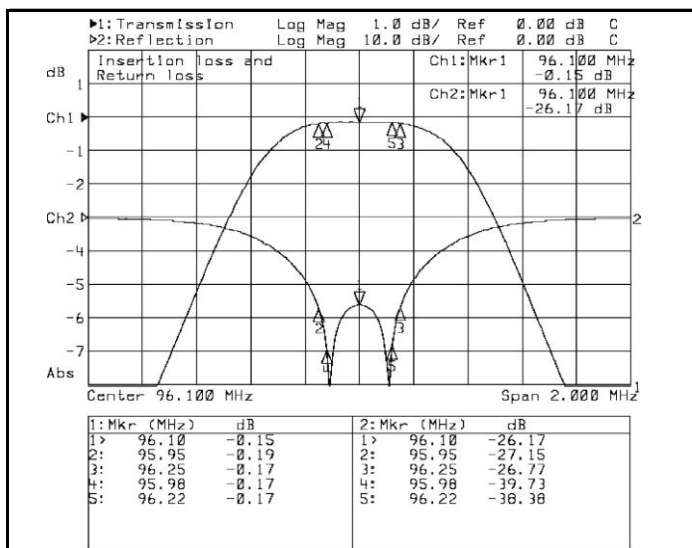


PART NUMBER: 20031

TITLE: 10kW FM BAND PASS FILTER (DOUBLE CAVITY)



MECHANICAL CHARACTERISTICS	
Connections (*)	EIA 1 5/8"
Temperature range (C°)	-10 ÷ 50
Weight (kg)	57



ELECTRICAL CHARACTERISTICS	
Frequency range (MHz)	87.5 ÷ 108
Maximum input power (W)	10000
Insertion loss (dB) @ fo	< 0.20
Insertion loss (dB) @ fo ± 150 kHz	< 0.30
Selectivity (dB) @ fo ± 2 MHz	> 24
Return loss (dB)	> 26
Input/output impedance (Ohm)	50

(*) Different connectors on request.