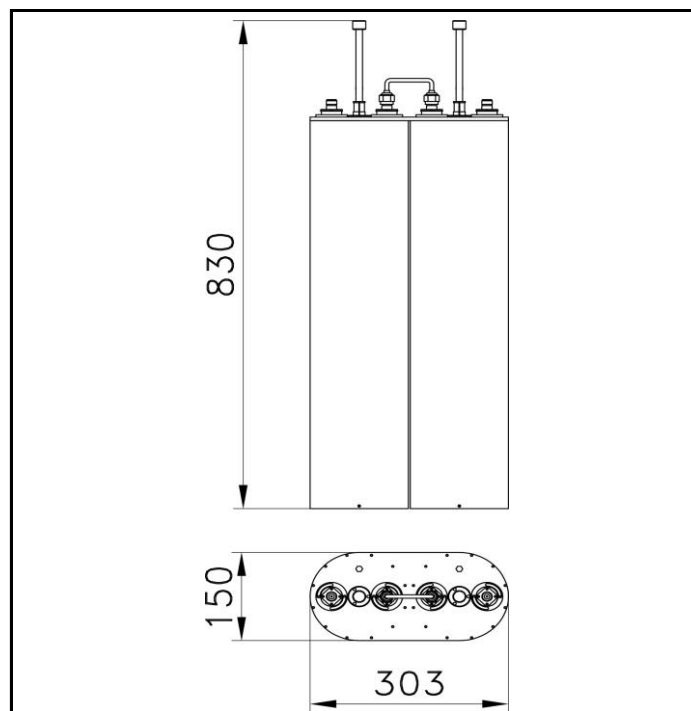
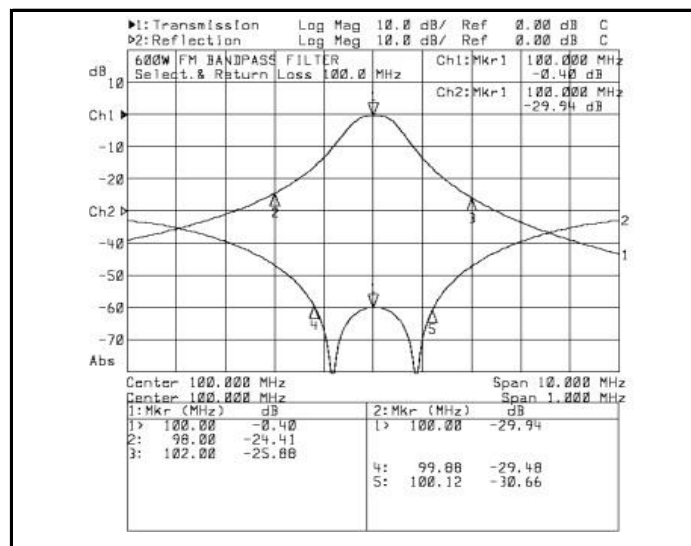
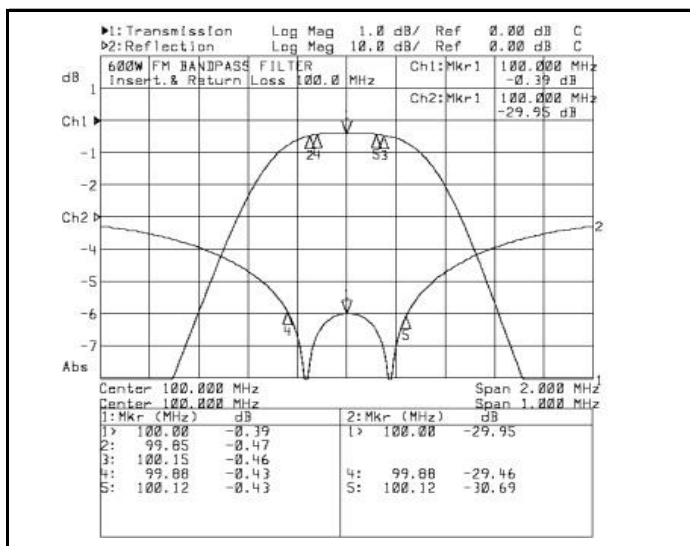


PART NUMBER: 20001-L

TITLE: 600W FM BAND PASS FILTER (DOUBLE CAVITY)



MECHANICAL CHARACTERISTICS	
Connections (*)	N
Temperature range (C°)	-10 ÷ 50
Weight (kg)	12



ELECTRICAL CHARACTERISTICS	
Frequency range (MHz)	87.5 ÷ 108
Maximum input power (W)	600
Insertion loss (dB) @ fo	< 0.45
Insertion loss (dB) @ fo ± 150 kHz	< 0.55
Selectivity (dB) @ fo ± 2 MHz	> 24
Return loss (dB)	> 26
Input/output impedance (Ohm)	50

(*) Different connectors on request.