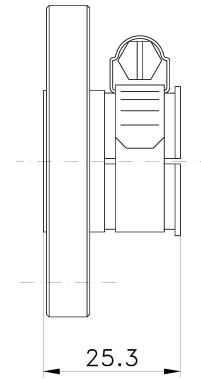


Product description **Flanges with clamping connection**

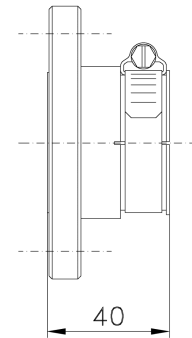
Part Number	<b>1130</b>
Impedance [Ohm]	50
Connectors	EIA 7/8"
Weight [kg.]	0.18



Overall dimensions [WxDxH] [mm.] 58x25.3x58

Product description **Flanges with clamping connection**

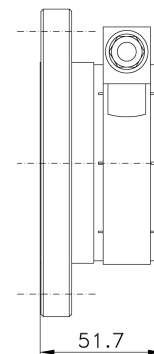
Part Number	<b>1023</b>
Impedance [Ohm]	50
Connectors	EIA 1 5/8"
Weight [kg.]	0.5



Overall dimensions [WxDxH] [mm.] 90x40x90

Product description **Flanges with clamping connection**

Part Number	<b>1069</b>
Impedance [Ohm]	50
Connectors	EIA 3 1/8"
Weight [kg.]	0.95



Overall dimensions [WxDxH] [mm.] 130x51.7x130

Product description **Flanges with clamping connection**

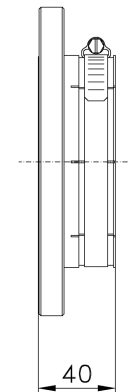
Part Number	<b>1362</b>
Impedance [Ohm]	50
Connectors	EIA 4 1/16"
Weight [kg.]	1.1



Overall dimensions [WxDxH] [mm.] 157.5x40x157.5

Product description **Flanges with clamping connection**

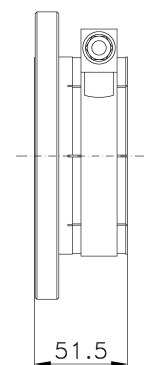
Part Number	<b>1170</b>
Impedance [Ohm]	50
Connectors	EIA 4 1/8"
Weight [kg.]	1.2



Overall dimensions [WxDxH] [mm.] 160x40x160

Product description **Flanges with clamping connection**

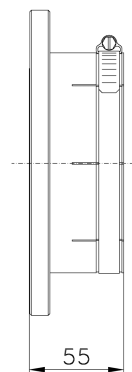
Part Number	<b>1318</b>
Impedance [Ohm]	50
Connectors	EIA 4 1/2"
Weight [kg.]	1.4



Overall dimensions [WxDxH] [mm.] 160x51.5x160

Product description **Flanges with clamping connection**

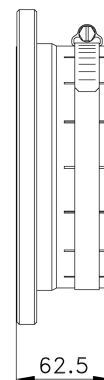
Part Number	<b>1324</b>
Impedance [Ohm]	50
Connectors	EIA 4 7/8"
Weight [kg.]	1.6



Overall dimensions [WxDxH] [mm.] 176x55x176

Product description **Flanges with clamping connection**

Part Number	<b>1131</b>
Impedance [Ohm]	50
Connectors	EIA 6 1/8"
Weight [kg.]	2.8



Overall dimensions [WxDxH] [mm.] 206.5x62.5x206.5