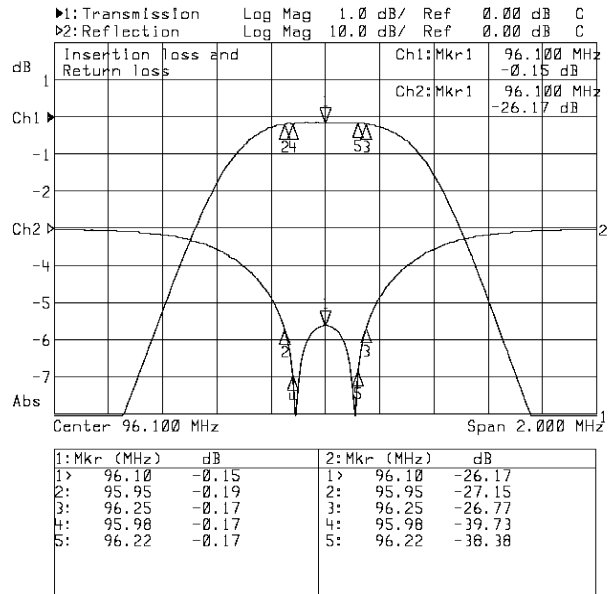
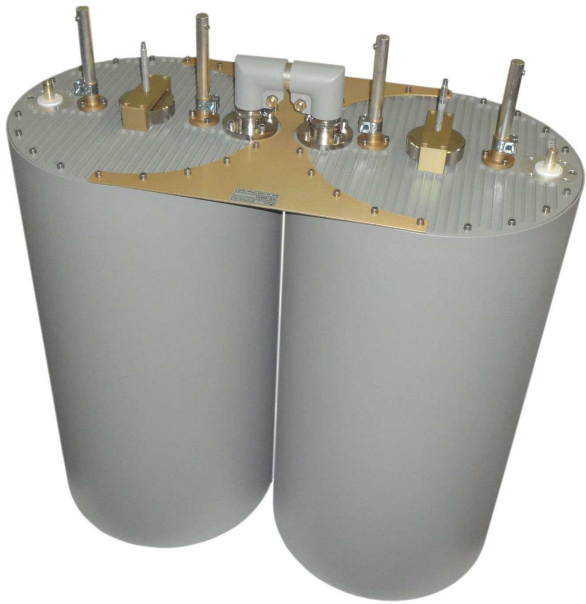


# Technical data sheet

Part Number **20031**

Band-pass filters

## FM-Radio Band II 10kW Band Pass Filter-double cavity



### Mechanical Characteristics

Connections	EIA 1 5/8" Male
Overall dimensions [WxDxH] [mm.]	450x920x1150
Temperature range [C°]	-10 ÷ 50
Weight [kg.]	57

### Electrical Characteristics

Frequency Range [MHz]	87.5 ÷ 108
Maximum Input Power [W]	10000
Insertion Loss [dB] @ Fo	< 0.20
Insertion Loss [dB] @ Fo ± 150 kHz	< 0.30
Selectivity [dB] @ Fo ± 2 MHz	> 24
Return loss [dB]	> 26
Input/Output Impedance [Ohm]	50

