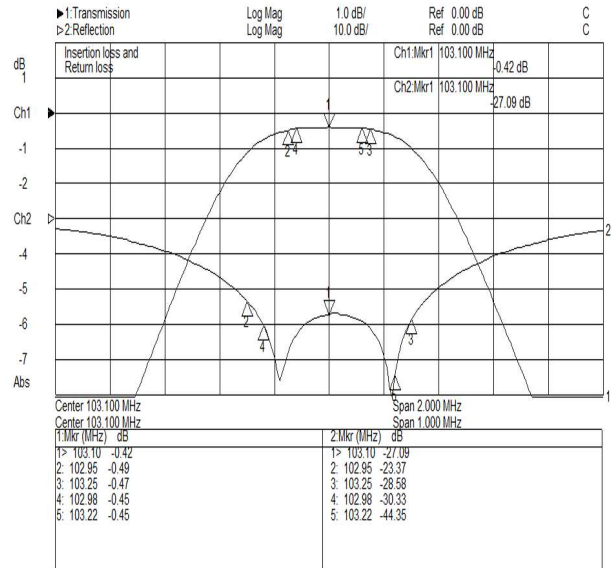


Technical data sheet

Part Number **20001-L-S3**

Star type configuration

FM-Radio Band II 3x600W STAR COMBINER - Double Cavity Band Pass Filter



Mechanical Characteristics

Connections

Input	N Female
Output	DIN 7/16 or EIA 7/8"

Overall dimensions [WxDxH] [mm.]	460x305x850
Temperature range [C°]	-10 ÷ 50
Weight [kg.]	43

Electrical Characteristics

Frequency Range [MHz]	87.5 ÷ 108
Insertion Loss by Channels [dB]	< 0.55
Return loss by Channels [dB]	> 26
Input/Output Impedance [Ohm]	50
Minimum distance between Channels [MHz]	2
Insulation Between Channels [dB]	> 30
Maximum Channel Input Power [W]	600
Maximum Output Power [W]	1800

