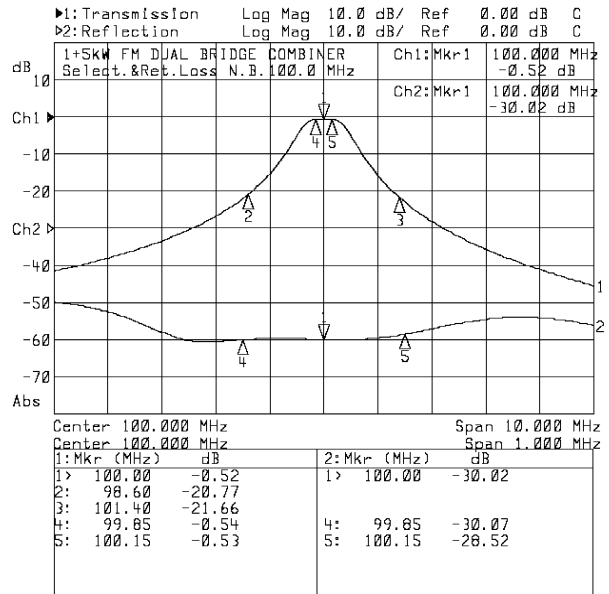


FM-Radio Band II 6kW COMBINER BridgeDiplexer - Compact Line

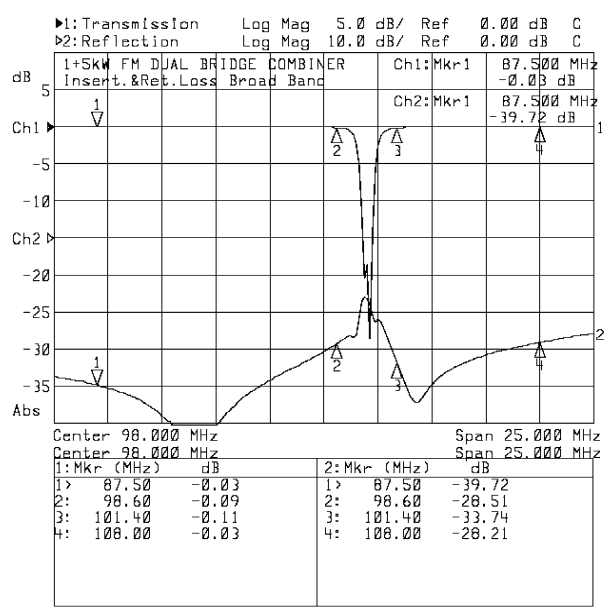


Mechanical Characteristics

Connections	
Input narrowband	DIN 7/16 or EIA 7/8"
Input broadband	EIA 7/8"
Output	EIA 7/8"
Overall dimensions [WxDxH] [mm.]	520x450x900
Temperature range [C°]	-10 ÷ 50
Weight [kg.]	43

Electrical Characteristics

Frequency Range [MHz]	87.5 ÷ 108
Narrow-band Insertion Loss [dB]	< 0.55
Broad-band Insertion Loss [dB]	< 0.2
Minimum distance between Channels [MHz]	1.4
Insulation NB>BB [dB]	> 40
Insulation BB>NB [dB]	> 45
Return loss by Channels [dB]	> 26
Input/Output Impedance [Ohm]	50
Narrow-band Maximum Power [W]	1000
Broad-band Maximum Power [W]	5000
Maximum Output Power [W]	6000
Max. Group Delay Variation [ns]	



All data contained in this technical sheet are not binding and can be changed without notice

Data updating 02/09/2013