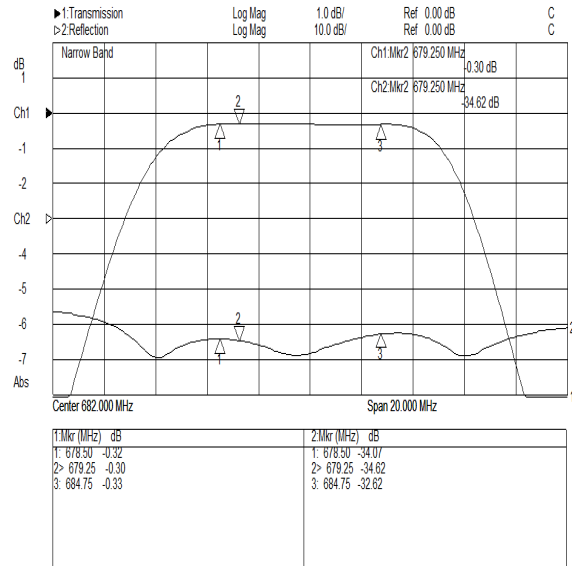
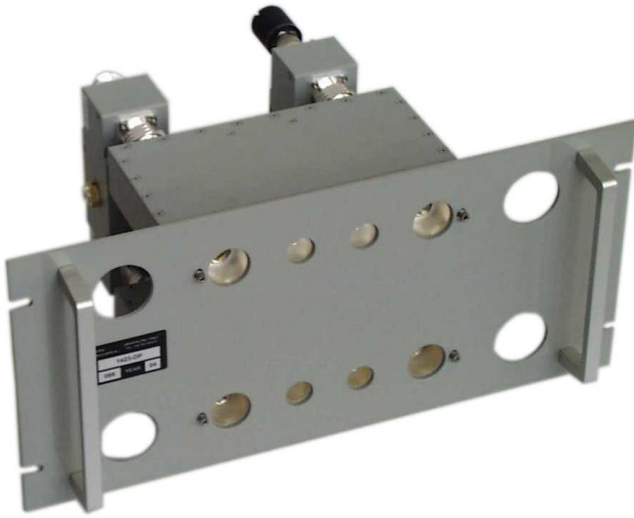


Technical data sheet

Part Number **1423-DP-R**

Double bridge configuration

Band IV-V 1+1kW UHF Double Bridge Combiner (Rack Version)



Mechanical Characteristics

Connections

Input narrowband	N, DIN 7/16 or EIA 7/8"
Input broadband	N, DIN 7/16 or EIA 7/8"
output	EIA 7/8"

Overall dimensions [WxDxH] [mm.] **483x480x222**

Temperature range [C°] **-10 ÷ 50**

Weight [kg.] **14**

Electrical Characteristics

Frequency Range [MHz] **470 ÷ 862**

Bandwidth [MHz] **6÷8**

Narrow-band Insertion Loss [dB] **< 0.45**

Broad-band Insertion Loss [dB] **< 0.2 max**

Narrow-band Return Loss [dB] **> 26**

Broad-band Return Loss [dB] **> 26**

Input/Output Impedance [Ohm] **50**

Minimum Distance Between Channels **1 guard channel**

Insulation NB>BB [dB] **> 40**

Insulation BB>NB [dB] **> 40**

Narrow-band Maximum Power [W] **1000 ATV (500 DTV)**

Maximum Output Power [W] **3000 ATV (2000 DTV)**

Max. Group Delay Variation [ns] **20**

