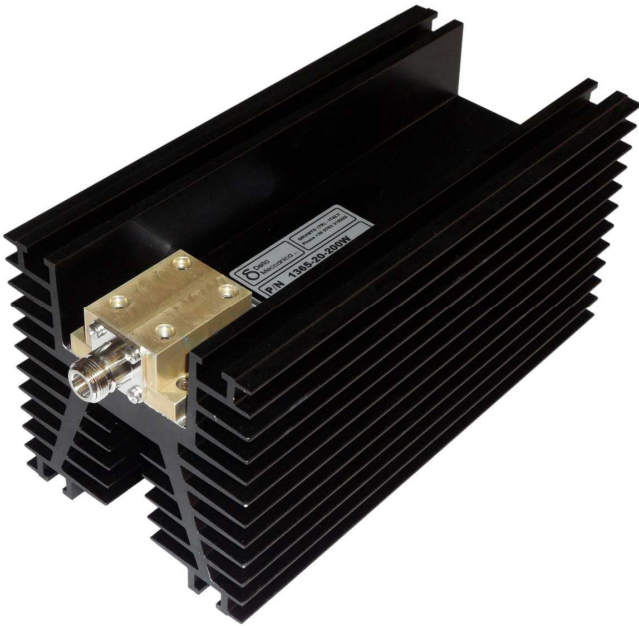


Technical data sheet

Part Number **1365-20**

Dummy loads

DC ÷ 862MHz 200W DUMMY LOAD



Mechanical Characteristics

Connections	N or DIN 7/16
Overall dimensions [WxDxH] [mm.]	120x265x123
Temperature range [C°]	-10 ÷ 50
Weight [kg.]	2.5
Cooling system	Convection

Electrical Characteristics

Frequency Range [MHz]	DC ÷ 862
Return loss [dB]	> 26
Input Impedance [Ohm]	50
Maximum Input Power [W]	200 (rms)
Blower AC power [V]	N.A.

