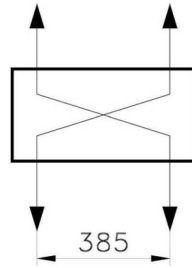
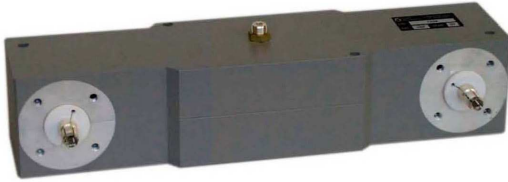


# Technical data sheet

Part Number 1338

Hybrid couplers

## Band III 3dB Hybrid Coupler 10kW



### Mechanical Characteristics

Connections	EIA 1 5/8"
Connections options	N, 7/16, EIA 7/8" and 3 1/8"
Overall dimensions [WxDxH] [mm.]	477x170x140
Temperature range [C°]	-10 ÷ 50
Weight [kg.]	6.5

### Electrical Characteristics

Frequency Range [MHz]	170 ÷ 240
Coupling Factor [dB]	3 ± 0.4
Insulation [dB]	> 35
Maximum Total Power [W]	10000
Return loss [dB]	> 26
Impedance [Ohm]	50

